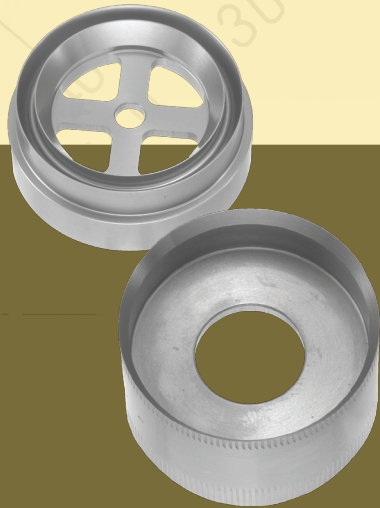




**Instrumentation for Aesthetic & Reconstructive Breast Procedures**

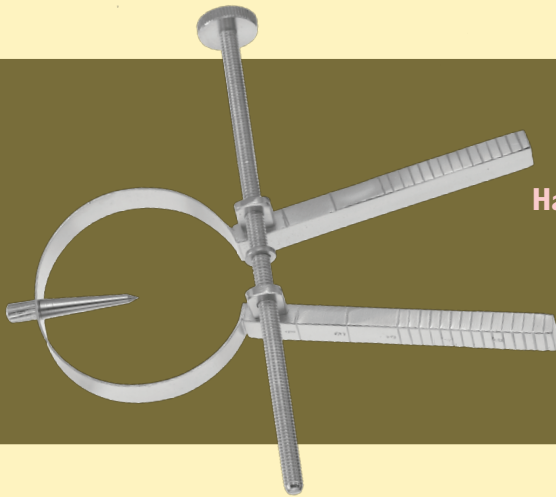
**Padgett Instruments has been offering quality instruments since 1937, specializing in Plastic & Reconstructive surgery.**



### **Grossman Areola Markers (8 sizes)**

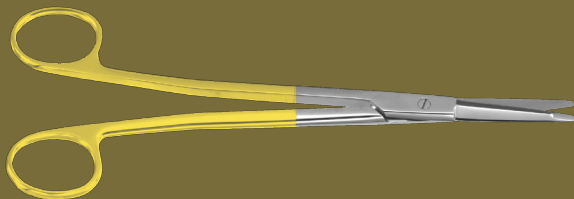
### **Freeman Areola Markers**

- Can be used pre-op for measuring the nipple-areola complex (NAC)
- Used to mark skin prior to incision when replacing the NAC
- Hole in the center used for centering purposes



### **Halpern Breast Marker**

- Marker for repositioning of the nipple
- Screw adjustment fixes the angle to facilitate marking the contralateral breast



### **Padgett SuperCut Tungsten Carbide Scissors**

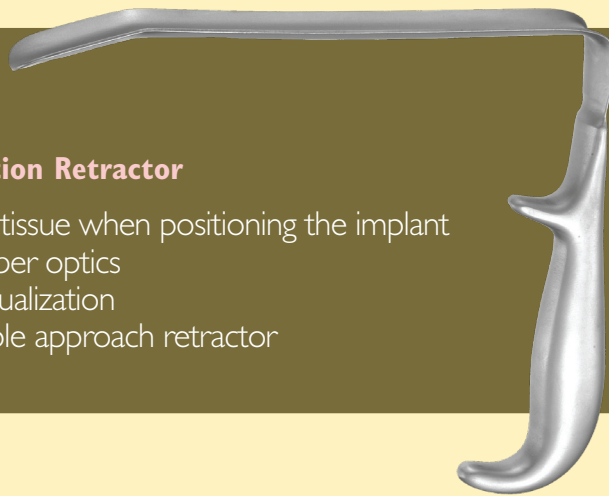
- Large selection of specialty scissors to allow for a clean, precise cut
- Tungsten Carbide inserts are fused into the blades for durability
- SuperCut style provides one serrated blade to grip and one sharp blade to cut

# *Great Artisans Require Great Instruments*



## **Crow Coagulating Forceps**

- Long length ideal for reaching into tight spaces to control bleeding
- Insulated shafts with exposed tips



## **Ferreira Breast Augmentation Retractor**

- Used to retract soft tissue when positioning the implant
- With and without fiber optics
- Angled tip aids in visualization
- Designed as a multiple approach retractor

## **Agris-Dingman Submammary Dissector**

- Used to create a submammary pocket for insertion of the implant
- Separates breast's soft tissue from the muscle to create the pocket
- Set of 2, left and right patterns , 14"



## DISSECTORS

Part #	Description	Length	Width	Diameter
1.	P625 Penn Breast Dissector	12.75" (324mm)	1" (25mm)	-----
2.	P630 MacCollum-Dingman Breast Dissector	6.125" (410mm)	1.5" (38mm)	-----
3.	P635 MacCollum-Dingman Submammary Dissector	11.75" (298mm)	20mm	-----
4.	P637 McInnis PolyCurette Breast Instrument	12.5" (318mm)	30mm	-----
5.	P632 Jacobs Transaxillary Dissector	17" (432mm)	1/2" (13mm)	-----
6.	P634 Wieslander Breast Dissector	17.75" (451mm)	1" (25mm)	-----
7.	P636 Wieslander Breast Dissector	17" (432mm)	1 3/8" (35mm)	-----
8.	P4865 Reynolds Transaxillary Breast Dissector	15.5" (394mm)	38mm	-----
9.	P9054 Silverstein Breast Dissector	13.5" (343mm)	-----	-----
10.	P4990 Agris-Dingman Submammary Dissector; right & left	14" (356mm)	-----	-----
11.	P5990 Agris-Dingman Submammary Dissector; extra long arms, right & left	16" (406mm)	-----	-----

## MARKERS

Part #	Description	Length	Width	Diameter
12.	P454 Grossman Areola Marker; 8 sizes	-----	-----	(38mm-52mm)
13.	P470 Chang Areola Marker; with quadrant marks	-----	-----	-----
14.	P464 Freeman Areola Marker	-----	-----	38mm
15.	P465 Freeman Areola Marker	-----	-----	42mm
16.	P466 Freeman Areola Marker	-----	-----	50mm
17.	P467 Freeman Areola Marker	-----	-----	45mm
18.	P468 Freeman Areola Marker	-----	-----	34mm
19.	P469 Freeman Areola Marker	-----	-----	36mm
20.	P9312 Halpern Breast Marker	-----	-----	38mm
21.	P9313 Halpern Breast Marker	-----	-----	42mm
22.	P5005 Ackerman Areola Marker	-----	5.5" (140mm)	-----
23.	P5006 Ackerman Areola Marker	-----	6.25" (159mm)	-----
24.	P4944 McKissock Keyhole Pattern	-----	-----	38mm
25.	P4945 McKissock Keyhole Pattern	-----	-----	42mm
26.	P4946 McKissock Keyhole Pattern	-----	-----	45mm
27.	P8750 McKissock Mammoplasty Caliper	11.25" (286mm)	-----	-----
28.	P5001 Washer	-----	-----	38mm
29.	P5002 Washer	-----	-----	42mm
30.	P5003 Washer	-----	-----	45mm

## RETRACTORS

Part #	Description	Length	Width	Diameter
31.	P895 Ferreira Breast Augmentation Retractor	7.5" (191mm)	1" (25mm)	-----
32.	P895FO Ferreira Breast Augmentation Retractor with fiber optics	7.5" (191mm)	1" (25mm)	-----
33.	P529 Biggs Mammoplasty Retractor; standard	8" (203mm)	5cm	-----
34.	P529FO Biggs Mammoplasty Retractor; standard with fiber optics	8" (203mm)	5cm	-----
35.	P530 Biggs Mammoplasty Retractor; narrow	6" (152mm)	3cm	-----
36.	P530FO Biggs Mammoplasty Retractor; narrow with fiber optics	6" (152mm)	3cm	-----
37.	P7840 Ersek Retractor; L shaped	8.25" (210mm)	-----	-----
38.	P7841 Ersek Retractor; U shaped	8.25" (210mm)	-----	-----
39.	P675 Fischl Shoe Horn Retractor; double ended	-----	-----	-----

## MISCELLANEOUS

Part #	Description	Length	Width	Diameter
40.	P790 Habal Capsulotomy Knife	10.75" (273mm)	7.5mm	-----
41.	P9019 Foerster Capsulotomy Knife	-----	-----	-----
42.	P8670 Amar Mammoplasty Clamp	6.5" (165mm)	21mm	-----
43.	P9043 Crow Coagulating Forceps, insulated	9" (229mm)	-----	-----

For further information on these and other Padgett Instruments products, please contact your Jarit representative or visit [www.Integra-LS.com](http://www.Integra-LS.com).



USA and Canada

877-468-5572  
609-750-4257 (Fax)

Outside USA and Canada

914-592-9050  
914-592-8056 (Fax)

Integra LifeSciences

311 Enterprise Drive  
Plainsboro, NJ 08536  
[www.Integra-LS.com](http://www.Integra-LS.com)

J. Jammer Surgical Instruments

9 Skyline Drive  
Hawthorne, NY 10532  
[www.jarit.com](http://www.jarit.com)